

Loft Solo  
INTELLIGENT

Loft Solo  
SMART

TECHNICAL CATALOG

Loft Solo  
INTELLIGENT



Loft Solo  
SMART





# Loft Solo

## INTELLIGENT

CUSTOM SHELVING SYSTEM

TECHNICAL INFORMATION

# Loft Solo INTELLIGENT

EVERY ROOM, EVERY SPACE IS UNIQUE, OUR LOFT SOLO INTELLIGENT SHELVING SYSTEM WILL PROVIDE GREAT FLEXIBILITY USING DESIGN AND FUNCTION, SATISFYING THE HIGHEST DEMANDS IN ENGINEERING AS WELL AS QUALITY, CREATING A WELL ORGANIZED SPACE.





PULL-DOWN VALET ROD



SLIDING PANT RACK, TIE DRAWER

ADDITIONAL ACCESORIES ARE ALSO AVAILABLE. SEE PAGE 6-8.



SYSTEM ATTACHMENT SOLUTIONS



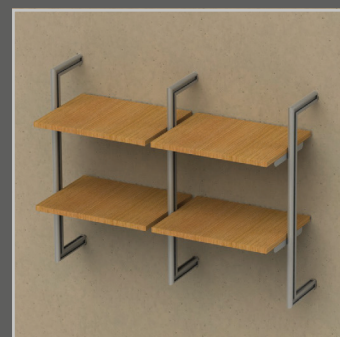
WALL ATTACHMENT



CEILING ATTACHMENT

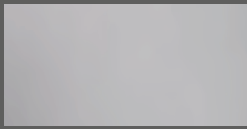


CORNER SOLUTION

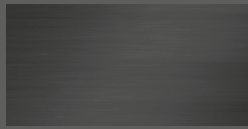


WALL ATTACHMENT  
C-FORM

PROFILES



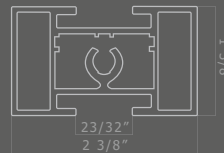
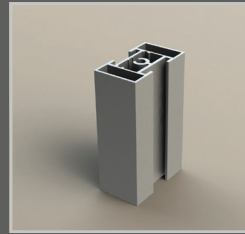
PROFILE COLOR: **AL1** - NATURAL  
MATT ANODIZED, ALL PROFILES



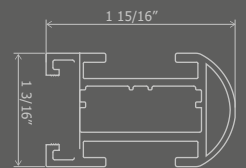
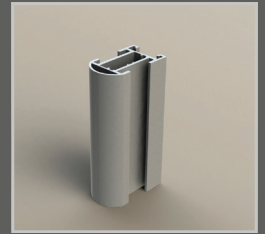
PROFILE COLOR: **GF** - GRAPHITE ANODIZED  
FOR **SAS GP2**

OTHER COLORS AVAILABLE AS SPECIAL REQUEST

SAS GP1

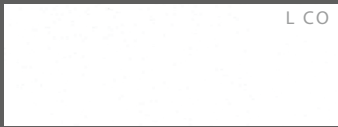


SAS GP2



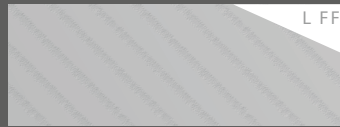
FURNITURE COLORS

LAMINATE OPTIONS



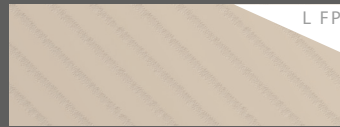
L CO

WHITE



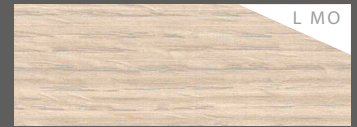
L FF

WHITE WITH GRAINS



L FP

CHAMPAGNE WITH GRAINS



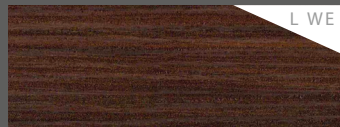
L MO

MORIER



L NC

WALNUT



L WE

WENGE



L EG

ALDER



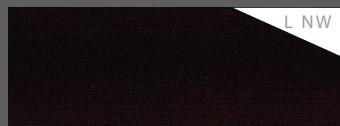
L BB

BAVARIAN BEECH



L BK

BIRCH



L NW

NAIROBI WENGE

LACQUERED MDF FOR CABINET FRONTS AND SHELVES

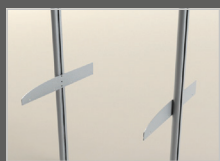


MDF W

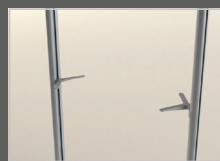
WHITE

FURTHER MDF FURNITURE IN INDIVIDUAL RAL COLOR OR COMPLETE VENEREED FURNITURE ON REQUEST.  
PLEASE CHECK FOR ALUMINUM FRAME SORTIMENT

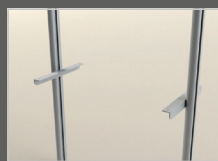
## SHELF HOLDERS



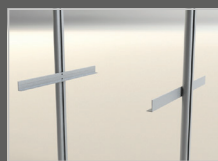
**SAS W141**  
SIDER HOLDER FOR  
WOOD SHELF



**SAS GP2G / SAS GP2H**  
SUPPORT HOLDER FOR  
WOOD  
OR GLASS SHELF (ALSO  
AVAILABLE IN **GF**  
FINISH)



**SAS GP2HL**  
**SAS GP1HL**  
SUPPORT HOLDER FOR  
GLASS SHELF (ALSO  
AVAILABLE IN **GF**  
FINISH)



**SAS 6116**  
SIDE HOLDER FOR  
WOOD SHELF  
(CAN BE USED ONLY  
FOR GP1)



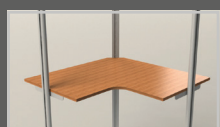
**SAS GP2HLA**  
ANGLED ADJUSTABLE  
SHELF HOLDER



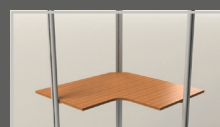
SUPPORT HOLDER FOR  
WOOD SHELF TILL 900  
MM (WITH CROSS  
SUPPORT) AVAILABLE  
ALSO FOR GP2HL/  
GP1HL AND W141

## SHELVES

### CORNER SHELF



**SAS GP2HL**  
CORNER SHELF WITH  
1" WOOD

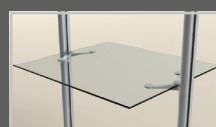


**SAS GP2H**  
CORNER SHELF WITH  
1" WOOD



**SAS W141**  
CORNER SHELF WITH  
23/32" WOOD

### GLASS SHELF



**SAS GP2G**  
GLASS SHELF WITH 1/4" TEMPERED  
GLASS

CORNER SHELF		HEIGHT	WIDTH	DEPTH	LOADABILITY
GPSPK1	LSSPK125	1 3/16"	19 11/16" - 47 1/4"	11 13/16" - 23 5/8"	66 lbs
GPSPHL1/2	LSSPHL225	1 25/32"			88 LBS
GPSPW141	LSSPW1418	2 3/4"			88 LBS

GLASS SHELF		HEIGHT	WIDTH	DEPTH	LOADABILITY
GP2G	LSÜPK16	1 9/16" (1/4" GLASS TEMPERED)	9 27/32" - 37 13/32"	11 13/16" - 23 5/8"	66 LBS

### WOOD SHELF



**SAS GP2HL**  
WOOD SHELF WITH 1"  
WOOD



**SAS GP2H**  
WOOD SHELF WITH 1"  
WOOD



**SAS W141**  
WOOD SHELF WITH  
23/32" WOOD

### SPECIAL SHELVES



**LSKFP18**  
PULL-OUT SHELF WITH  
23/32" WOOD



**LSFPA**  
ANGLED ADJUSTABLE  
SHELF WITH 1" WOOD  
13/32 , 1 3/16, 1 31/32

WOOD SHELF		HEIGHT	WIDTH	DEPTH	LOADABILITY
GP2H	LSFPPK125	1 9/16"	19 11/16" - 35 13/16"	11 13/16" - 23 5/8"	66 LBS
GP2HL	LSFPKL225	1 3/16"	19 11/16" - 47 1/4"		88 LBS
W141	LSFPW14118	2 3/4"			88 LBS

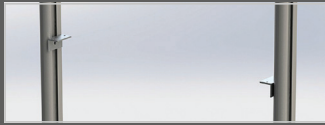
PULL-OUT SHELF		HEIGHT	WIDTH	DEPTH	LOADABILITY
LSKFP18		4 11/32"	12 7/32" - 35 13/16"	11 13/16" - 23 5/8"	66 LBS

ANGLED ADJUSTABLE SHELF		HEIGHT	WIDTH	DEPTH	LOADABILITY
LSFPA	10°	3 15/16" - 18 1/2"	11 13/16" - 35 13/16"	11 13/16" - 23 5/8"	88 LBS
	30°				
	50°				



BOXES

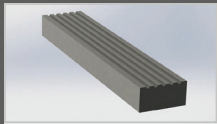
DRAWER SUPPORT



SAS GP1KL  
BOX HOLDER  
FOR GP1

SAS GP2KL  
BOX HOLDER  
FOR GP2

- TOP OF THE BOX 1" WOOD
- WOODEN FRONT 23/32" WOOD
- WOOD DRAWER WITH BLUM TANDEM DRAWER RUNNERS AND SOFT CLOSE
- METAL DRAWERS WITH BLUM METABOX DRAWER RUNNERS AND WITHOUT SOFT CLOSE.
- FURNITURE DOORS WITH BLUM HINGES

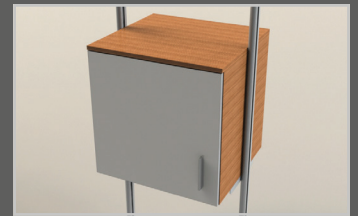


HANDLE

FLOATING DRAWERS/CABINETS



WITH DRAWERS



WITH DOOR(S)

DRAWERS ON ROLLERS



WITH DRAWERS

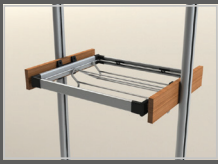


DRAWER FITTING: BLUM

INSERTS FOR DRAWER FRAMES SEE CATALOGUE, PROFILE SAS 088

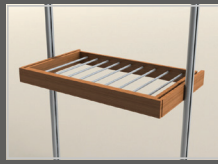
NUMBER OF DRAWERS / DOORS	TYPE OF THE DRAWER TYPE	FRONT TYPE	HEIGHT	WIDTH	DEPTH	ART. NR.	
						FOR GP1	FOR GP2
<b>SUSPENDED</b>							
2 DRAWERS	WOOD	WOOD FRONT	15 5/16"	12 7/32" – 35 7/16"	11 13/16" – 23 5/8"	LS12FF18F	LS22FF18F
		ALUFRONT				LS12ÜF18F	LS22ÜF18F
	METAL	WOOD FRONT				LS12FF18T	LS22FF18T
		ALUFRONT				LS12ÜF18T	LS22ÜF18T
3 DRAWERS	WOOD	WOOD FRONT	22 9/16"	12 7/32" – 35 7/16"	11 13/16" – 23 5/8"	LS13FF18F	LS23FF18F
		ALUFRONT				LS13ÜF18F	LS23ÜF18F
	METAL	WOOD FRONT				LS13FF18T	LS23FF18T
		ALUFRONT				LS13ÜF18T	LS23ÜF18T
4 DRAWERS	WOOD	WOOD FRONT	29 27/32"	12 7/32" – 24 1/32"	11 13/16" – 23 5/8"	LS14FF18F	LS24FF18F
		ALUFRONT				LS14ÜF18F	LS24ÜF18F
	METAL	WOOD FRONT				LS14FF18T	LS24FF18T
		ALUFRONT				LS14ÜF18T	LS24ÜF18T
5 DRAWERS	WOOD	WOOD FRONT	37 1/16"	12 7/32" – 24 1/32"	11 13/16" – 23 5/8"	LS15FF18F	LS25FF18F
		ALUFRONT				LS15ÜF18F	LS25ÜF18F
	METAL	WOOD FRONT				LS15FF18T	LS25FF18T
		ALUFRONT				LS15ÜF18T	LS25ÜF18T
1 DOOR		WOOD FRONT	15 5/16" – 22 9/16"	12 7/32" – 19 11/16"	11 13/16" – 23 5/8"	LS11FN18T	LS21FN18T
	ALUFRONT	LS11ÜN18T				LS21ÜN18T	
2 DOORS		WOOD FRONT	22 9/16" – 37 1/16"	19 11/16" – 35 13/16"	11 13/16" – 23 5/8"	LS12FN18T	LS22FN18T
		ALUFRONT					LS22ÜN18T
<b>WITH ROLLERS</b>							
2 DRAWERS	WOOD	WOOD FRONT	19 7/16"	12 7/32" – 37 19/32"	11 13/16" – 23 5/8"	LS02FG18F	LS02ÜG18F
		ALUFRONT				LS02FG18T	LS02ÜG18T
	METAL	WOOD FRONT				LS02FG18T	LS02ÜG18T
		ALUFRONT				LS02ÜG18T	LS02ÜG18T
3 DRAWERS	WOOD	WOOD FRONT	26 11/16"	12 7/32" – 37 19/32"	11 13/16" – 23 5/8"	LS03FG18F	LS03ÜG18F
		ALUFRONT				LS03FG18T	LS03ÜG18T
	METAL	WOOD FRONT				LS03FG18T	LS03ÜG18T
		ALUFRONT				LS03ÜG18T	LS03ÜG18T
4 DRAWERS	WOOD	WOOD FRONT	33 31/32"	12 7/32" – 37 19/32"	11 13/16" – 23 5/8"	LS04FG18F	LS04ÜG18F
		ALUFRONT				LS04FG18T	LS04ÜG18T
	METAL	WOOD FRONT				LS04FG18T	LS04ÜG18T
		ALUFRONT				LS04ÜG18T	LS04ÜG18T
5 DRAWERS	WOOD	WOOD FRONT	41 3/16"	12 7/32" – 37 19/32"	11 13/16" – 23 5/8"	LS05FG18F	LS05ÜG18F
		ALUFRONT				LS05FG18T	LS05ÜG18T
	METAL	WOOD FRONT				LS05FG18T	LS05ÜG18T
		ALUFRONT				LS05ÜG18T	LS05ÜG18T

## ZUSATZPRODUKTE | SPECIAL ITEMS



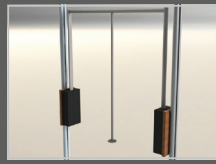
LSKC

SLIDING SHOE RACK



LSKN

SLIDING PANT RACK



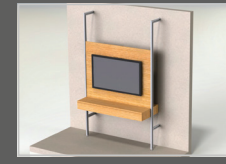
LSRH

PULL-DOWN VALET ROD



LS2RR2

DECORATIVE HANGING  
ROD



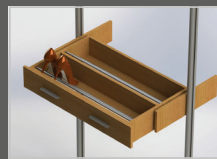
LS1ME / LS2ME

MEDIA CENTER  
TV-PANEL WITH ONE WOOD DRAWER  
(PUSH-OPEN)\*



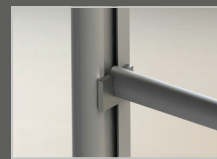
LS1HO / LS2HO

HOME OFFICE  
(WITH SUSPENDED DESK AND  
PUSH-OPEN WOOD DRAWER)



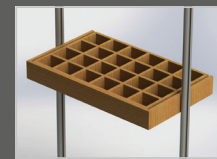
LS1K2C / LS2K2C

CUSTOMIZABLE SLIDING SHOE RACK



LS2RR1

SOLID HANGING RACK



LS1KNY / LS2KNY

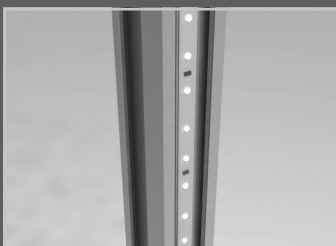
TIE DRAWER



GP2RS

CORNER HANGING  
(ROD BELOW CORNER  
SHELF)

	ART. NR.	HEIGHT	WIDTH	DEPTH
TV PANEL				
FOR GP1	LS1ME	53 5/32" - 98 7/16"	27 9/16" - 59 1/16"	19 11/16" - 23 5/8"
FOR GP2	LS2ME			
HOME OFFICE				
FOR GP1	LS1HO AL1	5 29/32"	23 5/8" - 59 1/16"	19 11/16" - 23 5/8"
FOR GP2	LS2HO XX*			
SLIDING SHOE RACK				
MADE-TO-MEASURE - FÜR   FOR GP1	LS1K2C AL1	5 29/32"	19 11/16" - 47 1/4"	19 11/16" - 23 5/8"
MADE-TO-MEASURE - FÜR   FORGP1	LS2K2C XX*			
FOR FIX SECTION WIDTH	LSKC	6 5/16"	23 5/8"	18 1/8" - 23 5/8"
SLIDING PANT RACK	LSKN	4 17/32"	21 21/32" - 37 13/32"	19 11/16" - 23 5/8"
PULL-DOWN VALET ROD	LSRH	35 7/16"	24 1/32" - 37 13/32"	19 11/16" - 23 5/8"
TIE DRAWER				
FOR GP1	LS1KNY AL1	3 11/32"	19 11/16" - 47 1/4"	19 11/16" - 23 5/8"
FOR GP2	LS2KNY XX*			
HANGING ROD				
DECORATIVE	LS2RR2	1 9/16"	12 7/32" - 47 1/4"	-
SOLID	LS2RR1	1 9/16"	12 7/32" - 35 13/16"	-
GP2RS	3 15/16"	19 11/16" - 47 1/4"	-	-



### LED

COLD/WARM OR RGB LED STRIPE

### LED-LIGHTING

TECHNICAL INFORMATION

COLD/WARM LED:

RGB LED: 17,28 W/M - 480 LM/M

THE LUMINOUS FLUX / COLOR TEMPERATURE (COLD/WARM LED) / COLOR (RGB LED) IS ADJUSTABLE WITH A RADIO FREQUENCY CONTROLLER.

IN ORDER TO CORRECTLY CHOOSE THE ITEMS OF THE LED-LIGHTING PLEASE USE THE LOFT SOLO INTELLIGENT ORDER SOFTWARE.



# Loft Solo

SMART

SHELVING SYSTEM

TECHNICAL INFORMATION

# Loft Solo SMART

LOFT SOLO SMART IS AN AFFORDABLE AND EFFECTIVE CONTEMPORARY DESIGN SOLUTION FOR INTERIOR LIVING SPACES INCLUDING: LIVING ROOM, CLOSET, MUD ROOM, OFFICE, OR LOUNGE.





HANGING ROD



WOOD SHELF



PUSH-OPEN DRAWERS

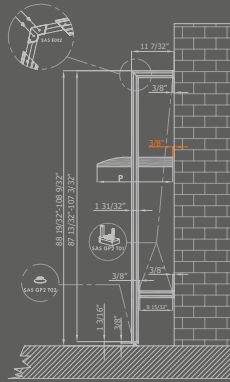
MORE ACCESSORIES ARE AVAILABLE. SEE PAGE 14-18.

### FRAME HEIGHTS AND ATTACHMENT OPTIONS

#### WALL ATTACHMENT



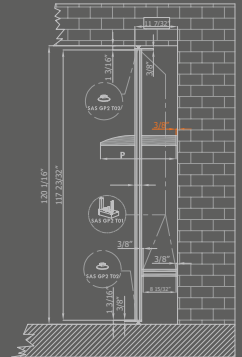
F-FRAME



#### CEILING ATTACHMENT



I-FRAME



DEPTH OF THE ITEM P=12 19/32" - 19 11/16"

#### WALL FIXING

FRAME HEIGHT WITH ADJUSTABLE FOOT  
88 19/32" - 108 9/32"

FRAME DEPTH WITH ATTACHMENT FITTINGS  
11 7/32"

ON THE TOP CUT IN 1 25/32", WITH ADJUSTABLE FOOT ON THE BOTTOM.

FULLY ASSEMBLED

ATTACHMENT FITTINGS PRE-ASSEMBLED

MAXIMUM DEPTH OF SYSTEM: 19 11/16"

#### FIXING TO THE CEILING

FRAME HEIGHT WITH ADJUSTABLE FOOT  
120 3/32"

FRAME DEPTH WITH ATTACHMENT FITTINGS  
11 7/32"

WITH ADJUSTABLE FOOT ON THE TOP AND THE BOTTOM.

FULLY ASSEMBLED

ATTACHMENT FITTINGS PRE-ASSEMBLED

MAXIMUM DEPTH OF SYSTEM: 19 11/16"

FRAME	HEIGHT	ART. NR
F - FRAME	88 19/32"	VF2250X285
	81 11/16"	VF2750X285
I - FRAME	120 3/32"	VI3050X285

#### WALL ATTACHMENT C-FORM



FRAME HEIGHT 59 1/16" - 78 3/4"

FRAME DEPTH WITH ATTACHMENT FITTINGS 11 7/32"

ON THE TOP AND BOTTOM CUT IN 1 25/32"

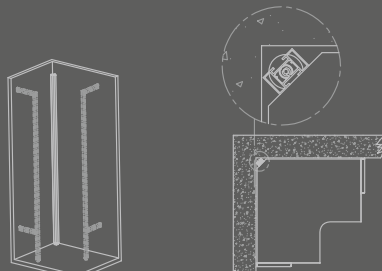
FULLY ASSEMBLED

ATTACHMENT FITTINGS ENCLOSED

MAXIMUM DEPTH OF SYSTEM: 19 11/16"

FRAME	HEIGHT	ART. NR
WALL ATTACHEMENT C-FORM	59 1/16"	VC1500X285
	78 3/4"	VC2000X285

#### CORNER SOLUTION



FRAME HEIGHT WITH ADJUSTABLE FOOT 88 19/32"/ 108 9/32"/ 120 3/32"

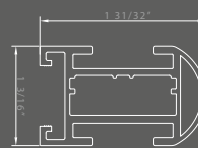
WITH ADJUSTABLE FOOT ON THE BOTTOM.

FULLY ASSEMBLED

FOR CORNER SHELF

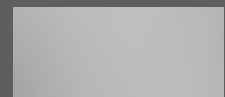
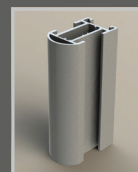
FRAME	HEIGHT	ART. NR
CORNER SOLUTION	88 19/32"	VS12250
	81 11/16"	VS12750
	120 3/32"	VS13050

#### PROFILES

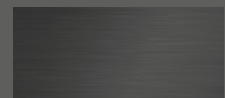


SAS GP2

MATERIAL: ALUMINUM



AL1 - NATURAL MATT ANODIZED



GF - GRAPHITE ANODIZED

SHELF HOLDER



SUPPORT HOLDER FOR SHELF

MATERIAL: ZAMAK  
 FINISH: POWDER-COATED GREY / GRAPHITE  
 LOADABILITY: 44 LBS / SHELF

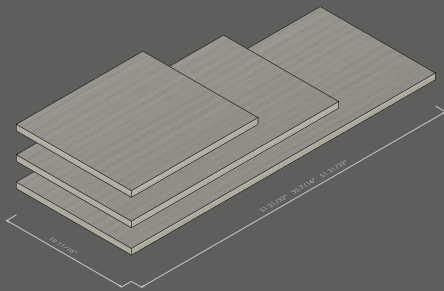


SUPPORT HOLDER FOR CORNER SOLUTION

MATERIAL: ZAMAK  
 FINISH: POWDER-COATED GREY  
 LOADABILITY: 44 LBS / SHELF

SUPPORT HOLDER	WIDTH	DEPTH	HEIGHT	LOADABILITY	ART. NR
FOR WOOD SHELVES	3 7/32"	8"	1 9/16"	44 LBS	SPF2
FOR CORNER SHELF					SPF3

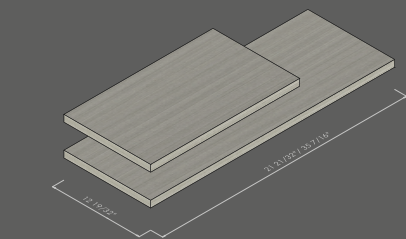
SHELVES



SHELF - DEPTH: 19 11/16"

MATERIAL: 1" LAMINATED PLATE, EDGE STRIP 1 ABS  
 LOADABILITY: 44 LBS / SHELF

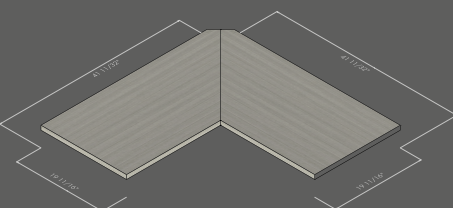
DESCRIPTION	WIDTH	ART. NR
LAMINATED SHELF - WHITE	21 21/32"	HSSR-5550-CO
	35 7/16"	HSSR-5553-CO
	51 31/32"	HSSR-5551-CO
LAMINATED SHELF - WENGE	21 21/32"	HSSR-5550-WE
	35 7/16"	HSSR-5553-WE
	51 31/32"	HSSR-5551-WE
LAMINATED SHELF - NUT	21 21/32"	HSSR-5550-NC
	35 7/16"	HSSR-5553-NC
	51 31/32"	HSSR-5551-NC
LAMINATED SHELF - MORIER	21 21/32"	HSSR-5550-MO
	35 7/16"	HSSR-5553-MO
	51 31/32"	HSSR-5551-MO



SHELF - DEPTH: 12 19/32"

MATERIAL: 1" LAMINATED PLATE, EDGE STRIP 1 ABS  
 LOADABILITY: 44 LBS / SHELF

DESCRIPTION	WIDHT	ART. NR
LAMINATED SHELF - WHITE	21 21/32"	HSSR-5555-CO
	35 7/16"	HSSR-5556-CO
LAMINATED SHELF - WENGE	21 21/32"	HSSR-5555-WE
	35 7/16"	HSSR-5556-WE
LAMINATED SHELF - NUT	21 21/32"	HSSR-5555-NC
	35 7/16"	HSSR-5556-NC
LAMINATED SHELF - MORIER	21 21/32"	HSSR-5555-MO
	35 7/16"	HSSR-5556-MO

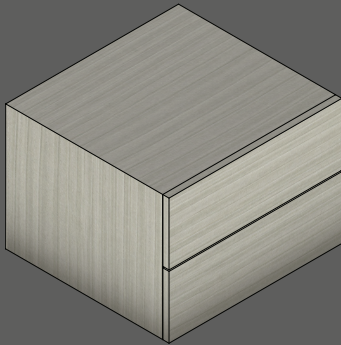


CORNER SHELF - DEPTH: 19 11/16"

MATERIAL: 1" LAMINATED PLATE, EDGE STRIP 1 ABS  
 LOADABILITY: 44 LBS / SHELF

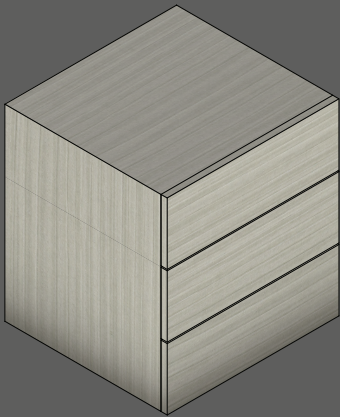
DESCRIPTION	SIZE	ART. NR
CORNER SHELF - WHITE	41 11/32" - 41 11/32"	HSSR-5558-CO
CORNER SHELF - WENGE		HSSR-5558-WE
CORNER SHELF - NUT		HSSR-5558-NC
CORNER SHELF - MORIER		HSSR-5558-MO

BOX UNIT



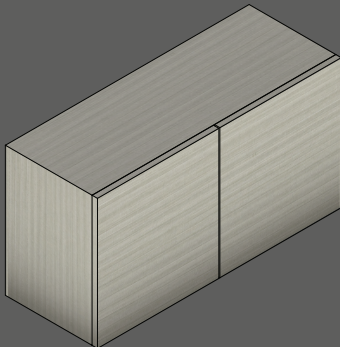
**BOX WITH 2 DRAWERS**

WIDTH: 21 21/32" - 35 7/16"  
 DEPTH: 19 11/16"  
 HEIGHT: 15 3/4"  
 MATERIAL: 23/32" LAMINATED PLATE, EDGE STRIP 1 ABS  
 OPENING: PUSH-OPEN OR WITH HANDLE  
 FRONT: WOOD OR GLASS WITH ALUMINUM FRAME



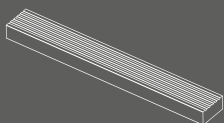
**BOX WITH 3 DRAWERS**

WIDTH: 21 21/32" - 35 7/16"  
 DEPTH: 19 11/16"  
 HEIGHT: 23 5/8"  
 MATERIAL: 23/32" LAMINATED PLATE, EDGE STRIP 1 ABS  
 OPENING: PUSH-OPEN OR WITH HANDLE  
 FRONT: WOOD OR GLASS WITH ALUMINUM FRAME



**BOX WITH 2 DOORS**

WIDTH: 35 7/16"  
 DEPTH: 12 19/32" - 19 11/16"  
 HEIGHT WITH 1 SHELF: 18 29/32"  
 HEIGHT WITH 2 SHELVES: 37 25/32"  
 MATERIAL: 23/32" LAMINATED PLATE, EDGE STRIP 1 ABS  
 OPENING: PUSH-OPEN OR WITH HANDLE  
 FRONT: WOOD OR GLASS WITH ALUMINUM FRAME



**HANDLE**

LENGTH: 5 13/16"  
 MATERIAL: ALUMINUM  
 FINISH: NATURAL MATTE ANODIZED

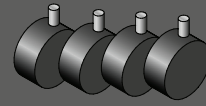


	COLOR	WIDTH	DEPTH	HEIGHT	FRONT	ART. NR	
BOX WITH 2 DRAWERS	WHITE	21 21/32"	19 11/16"	15 3/4"	WITH WOOD FRONT	WHITE	HSSR-3332XX-CO
					WITH ALUFRONT	LB9	HSSR-3332XX-CO-LB9
		WITH ALUFRONT			PW	HSSR-3332XX-CO-PW	
		35 7/16"			WITH WOOD FRONT	WHITE	HSSR-3337XX-CO
					WITH ALUFRONT	LB9	HSSR-3337XX-CO-LB9
		WITH ALUFRONT			PW	HSSR-3337XX-CO-PW	
	WENGE	21 21/32"			WITH WOOD FRONT	WENGE	HSSR-3332XX-WE
					WITH ALUFRONT	LB9	HSSR-3332XX-WE-LB9
		WITH ALUFRONT			PW	HSSR-3332XX-WE-PW	
		35 7/16"			WITH WOOD FRONT	WENGE	HSSR-3337XX-WE
					WITH ALUFRONT	LB9	HSSR-3337XX-WE-LB9
		WITH ALUFRONT			PW	HSSR-3337XX-WE-PW	
	NUT	21 21/32"	WITH WOOD FRONT	NUT	HSSR-3332XX-NC		
			WITH ALUFRONT	LB9	HSSR-3332XX-NC-LB9		
		WITH ALUFRONT	PW	HSSR-3332XX-NC-PW			
		35 7/16"	WITH WOOD FRONT	NUT	HSSR-3337XX-NC		
WITH ALUFRONT			LB9	HSSR-3337XX-NC-LB9			
WITH ALUFRONT		PW	HSSR-3337XX-NC-PW				
MORIER	21 21/32"	WITH WOOD FRONT	MORIER	HSSR-3332XX-MO			
		WITH ALUFRONT	LB9	HSSR-3332XX-MO-LB9			
	WITH ALUFRONT	PW	HSSR-3332XX-MO-PW				
	35 7/16"	WITH WOOD FRONT	MORIER	HSSR-3337XX-MO			
		WITH ALUFRONT	LB9	HSSR-3337XX-MO-LB9			
	WITH ALUFRONT	PW	HSSR-3337XX-MO-PW				
BOX WITH 3 DRAWERS	WHITE	21 21/32"	19 11/16"	23 5/8"	WITH WOOD FRONT	WHITE	HSSR-3317XX-CO
					WITH ALUFRONT	LB9	HSSR-3317XX-CO-LB9
		WITH ALUFRONT			PW	HSSR-3317XX-CO-PW	
		35 7/16"			WITH WOOD FRONT	WHITE	HSSR-3334XX-CO
					WITH ALUFRONT	LB9	HSSR-3334XX-CO-LB9
		WITH ALUFRONT			PW	HSSR-3334XX-CO-PW	
	WENGE	21 21/32"			WITH WOOD FRONT	WENGE	HSSR-3317XX-WE
					WITH ALUFRONT	LB9	HSSR-3317XX-WE-LB9
		WITH ALUFRONT			PW	HSSR-3317XX-WE-PW	
		35 7/16"			WITH WOOD FRONT	WENGE	HSSR-3334XX-WE
					WITH ALUFRONT	LB9	HSSR-3334XX-WE-LB9
		WITH ALUFRONT			PW	HSSR-3334XX-WE-PW	
	NUT	21 21/32"	WITH WOOD FRONT	NUT	HSSR-3317XX-NC		
			WITH ALUFRONT	LB9	HSSR-3317XX-NC-LB9		
		WITH ALUFRONT	PW	HSSR-3317XX-NC-PW			
		35 7/16"	WITH WOOD FRONT	NUT	HSSR-3334XX-NC		
			WITH ALUFRONT	LB9	HSSR-3334XX-NC-LB9		
		WITH ALUFRONT	PW	HSSR-3334XX-NC-PW			
	MORIER	21 21/32"	WITH WOOD FRONT	MORIER	HSSR-3317XX-MO		
			WITH ALUFRONT	LB9	HSSR-3317XX-MO-LB9		
		WITH ALUFRONT	PW	HSSR-3317XX-MO-PW			
		35 7/16"	WITH WOOD FRONT	MORIER	HSSR-3334XX-MO		
			WITH ALUFRONT	LB9	HSSR-3334XX-MO-LB9		
		WITH ALUFRONT	PW	HSSR-3334XX-MO-PW			
BOX WITH 2 DOORS	WHITE	12 19/32"	35 7/16"	18 29/32"	WITH WOOD FRONT	WHITE	HSSR-3339XX-CO
					WITH ALUFRONT	LB9	HSSR-3339XX-CO-LB9
		WITH ALUFRONT			PW	HSSR-3339XX-CO-PW	
		19 11/16"			WITH WOOD FRONT	WHITE	HSSR-3310XX-CO
					WITH ALUFRONT	LB9	HSSR-3310XX-CO-LB9
		WITH ALUFRONT			PW	HSSR-3310XX-CO-PW	
	WENGE	12 19/32"			WITH WOOD FRONT	WENGE	HSSR-3339XX-WE
					WITH ALUFRONT	LB9	HSSR-3339XX-WE-LB9
		WITH ALUFRONT			PW	HSSR-3339XX-WE-PW	
		19 11/16"			WITH WOOD FRONT	WENGE	HSSR-3310XX-WE
					WITH ALUFRONT	LB9	HSSR-3310XX-WE-LB9
		WITH ALUFRONT			PW	HSSR-3310XX-WE-PW	
	NUT	12 19/32"	WITH WOOD FRONT	NUT	HSSR-3339XX-NC		
			WITH ALUFRONT	LB9	HSSR-3339XX-NC-LB9		
		WITH ALUFRONT	PW	HSSR-3339XX-NC-PW			
		19 11/16"	WITH WOOD FRONT	NUT	HSSR-3310XX-NC		
			WITH ALUFRONT	LB9	HSSR-3310XX-NC-LB9		
		WITH ALUFRONT	PW	HSSR-3310XX-NC-PW			
	MORIER	12 19/32"	WITH WOOD FRONT	MORIER	HSSR-3339XX-MO		
			WITH ALUFRONT	LB9	HSSR-3339XX-MO-LB9		
		WITH ALUFRONT	PW	HSSR-3339XX-MO-PW			
		19 11/16"	WITH WOOD FRONT	MORIER	HSSR-3310XX-MO		
			WITH ALUFRONT	LB9	HSSR-3310XX-MO-LB9		
		WITH ALUFRONT	PW	HSSR-3310XX-MO-PW			



### BOX FITTING SET

SIZE: 1 3/16" X 11 13/16" X 1 3/16"  
 MATERIAL: ALUMINUM  
 FINISH: NATURAL MATT ANODISED  
 SUITABLE FOR ALL BOXES



### ROLLER-SET

SIZE: 1 3/16" X 11 13/16" X 1 3/16"  
 MATERIAL: PLASTIC / METAL  
 COLOR: BLACK  
 SUITABLE FOR ALL BOXES

	ART. NR.
BOX FIXING SET	GP2KL
ROLLER SET	GP2KG

## ACCESSORIES



### TV-PANEL AND ONE WOOD DRAWER (PUSH-OPEN)\*

WIDTH: 51 31/32"  
 HEIGHT: 59 1/16"  
 DEPTH: 11 7/32"



### HOME OFFICE (WITH SUSPENDED DESK AND PUSH-OPEN WOOD DRAWER)

WIDTH: 35 7/16" - 51 31/32"  
 HEIGHT: 5 29/32"  
 DEPTH: 19 11/16"



### HANGING ROD

MATERIAL OF THE RAIL: ALUMINUM  
 FINISH OF THE RAIL: NATURAL MATTE ANODISED  
 FINISH OF THE HOLDER: POWDER-COATED GREY



### ADAPTER FOR HANGING ROD RAIL BELOW CORNER SHELF

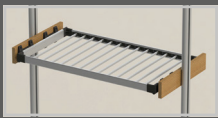


### SLIDING BASKET

WIDTH: 35 7/16"  
 HEIGHT: 5 5/16"  
 DEPTH: 19 11/16"  
 MATERIAL: NATURAL MATTE ANODISED



### ADAPTER + HANGING ROD



### SLIDING PANT RACK

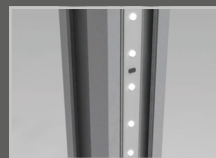
WIDTH: 35 7/16"  
 HEIGHT: 5 5/16"  
 DEPTH: 19 11/16"  
 MATERIAL: NATURAL MATTE ANODISED



### PULL-DOWN VALET ROD

WIDTH: 35 7/16"  
 HEIGHT: 32 9/32"  
 DEPTH: 5 1/2"  
 WITH FIXING AND CONNECTOR ITEMS  
 COLOR: GREY  
 CONNECTOR ITEM: 23/32" GREY LAMINATED PLATE, EDGE STRIP 2 ABS

	ART. NR.
BOX FIXING SET	GP2KL
ROLLER SET	GP2KG



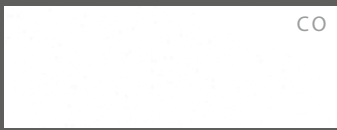
### LED LIGHTING

LENGTH: 39 3/8" - 78 3/4"  
 WIDTH: 13/32"  
 HEIGHT: 1/8"  
 COLOR, WHITE LED-LINE

SPECIAL ITEM	RASTER WIDTH	ART. NR.
TV PANEL	51 31/32 "	ME1320 XX*
HOME OFFICE	35 7/16"	HO900 XX*
	51 31/32"	HO1320 XX*
PULL-DOWN VALET ROD		RH900
SLIDING BASKET	35 7/16"	KK900
SLIDING PANT RACK		KN900
HANGING ROD	21 21/32"	GP2KS 550
	35 7/16"	GP2KS 900
	51 31/32"	GP2KS 1320
ADAPTER FOR CORNER HANGING ROD BELOW CORNER SHELF	-	GP2RS

LED-LIGHTING	ART. NR.	
LENGTH	39 3/8"	LED 1000
	78 3/4"	LED 2000

FURNITURE COLORS



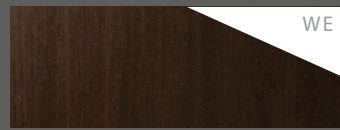
CO

WHITE



NC

WALNUT



WE

WENGE

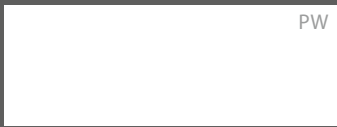


MO

MORIER

ALUMINUM FRAMES

GLASSES FOR ALU-FRAMES



PW

PURE WHITE



LB9

LIGHT BROWN

PROFILE FOR ALU-FRAMES



PROFILE SAS877

FINISH AL1

OPENING PUSH-OPEN

DESK SMART

ACCESSORIES - FURNITURE



DESK SMART

NORMAL OR EXTENDABLE DESK

DESK TYPE: ALUMINUM FRAME WITH LAMINATED DESKTOP

LENGTH: 70 7/8"

WIDTH: 31 1/2"

HEIGHT: 29 17/32"

THICKNESS OF DESKTOP: 23/32"

LENGTH OF THE GUEST DESKTOP (EXTENDABLE VERSION): 23 5/8"



WARDROBE SEAT WITH / WITHOUT SHOE RACK

ALUMINUM FRAME WITH LAMINATE WOOD SEAT TOP AND SEAT CUSHION (OPTIONAL)

LENGTH: 47 1/4"

WIDTH: 15 3/4"

HEIGHT: 15 3/4"

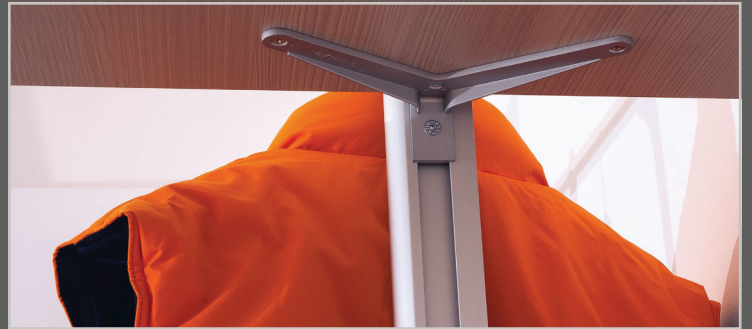
SEAT CUSHION

SIZE: 15 3/4" X 15 3/4"

COLOR: GREY

FURNITURE		ART. NR.	HEIGHT	WIDTH	LENGTH
DESK	NORMAL	DAF1800 XX*	29 17/32"	31 1/2"	70 7/8"
	EXTENDABLE DESK	DAH1800 XX*			70 7/8" (+ 23 5/8")
WARDROBE SEAT	WITH SHOE RACK	GBC1200 XX*	15 3/4"	15 3/4"	47 1/4"
	WITHOUT SHOE RACK	GBN1200 XX*			

\*COLOR CODE OF FURNITURE





Showroom: 300-2 Route 17 South Unit C  
Lodi NJ 07644

Office: 347 5th Ave. Suite 1402-519  
New York NY 10016

Phone NY: (917) 830-3193

Phone NJ: (201) 941-8020

Fax: (480) 247-5585

Web: [www.Cronosdesign.com](http://www.Cronosdesign.com)